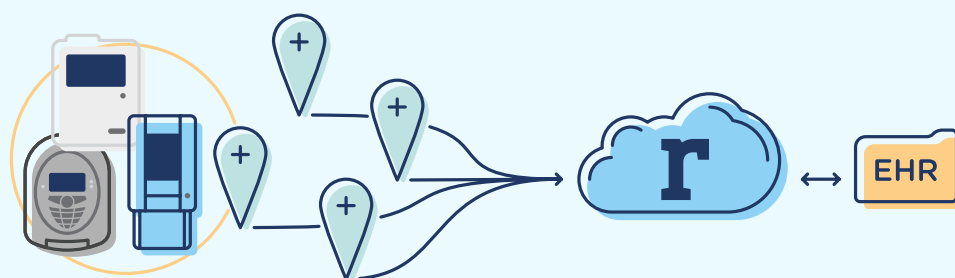




Stop entering lab results manually.

Relaymed automates lab workflows by connecting point-of-care devices directly to the EHR. As a streamlined, cloud based LIS alternative, Relaymed is designed specifically for the needs of primary care.

- Built for speed, simplicity and security
- Easy to implement, in five days or less
- Scalable. Try it on a few devices and locations, then expand as your needs grow
- Affordable, scalable monthly subscription plans and no hidden fees, with an instant ROI.
- Seamlessly integrated with and fully certified by your EHR



Find out more at relaymed.com

hello@relaymed.com

[@relaymed](https://twitter.com/relaymed)

+1 800 281 2936



The Invisible Solution with Visible Rewards.

Relaymed produces a number of benefits that unlock value and protect revenue, making it a must have in today's competitive healthcare marketplace.

- Automation optimizes workflow and practice efficiency
- Staff and providers can focus on value-added patient care
- Improved patient care increases satisfaction scores
- Results are recorded with 100% accuracy, making audits simpler than ever before
- All data is captured and stored with complete security



“Test results now go straight to the EHR, meaning practice staff can focus on more important tasks. Productivity and satisfaction are through the roof.”

PHILLIP F. BRESSOUD MD, FACP
UNIVERSITY OF LOUISVILLE PHYSICIANS

Find out more at relaymed.com

hello@relaymed.com

[@relaymed](https://twitter.com/relaymed)

+1 800 281 2936