

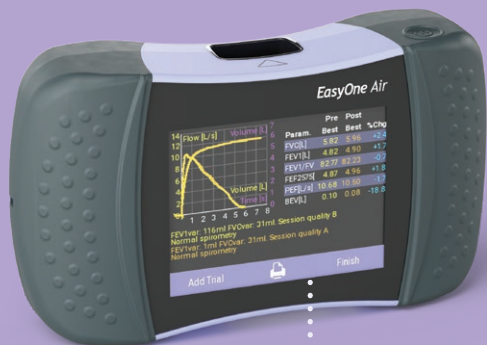


EasyOne Air

Portable and PC spirometer

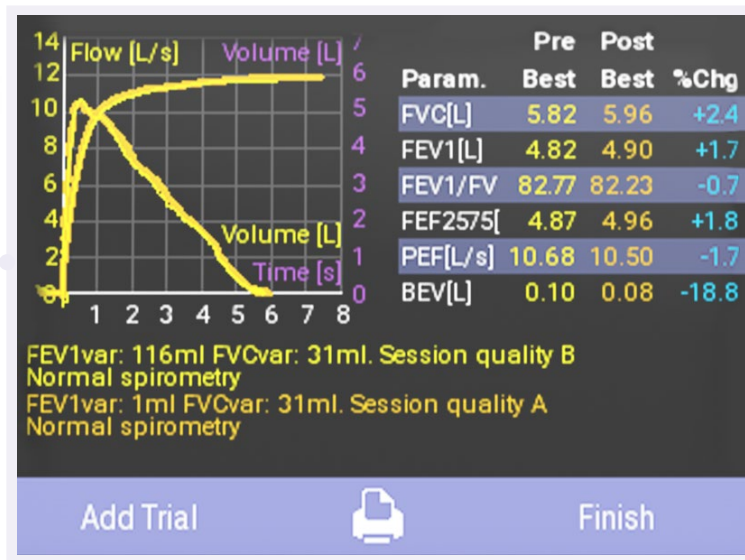
EasyOne Air is a flexible, accurate and proven spirometry solution. Easily connect to the PC with Bluetooth for real-time patient incentives, data exchange and EMR connectivity.

Simple. Certain. Proven.

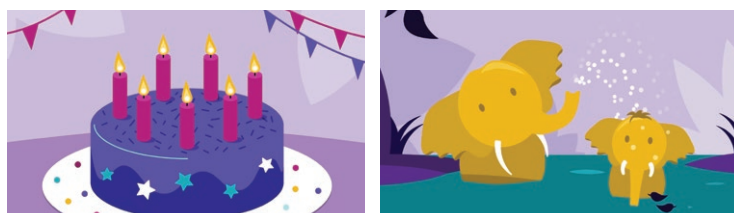


Features

- Large color screen
- Easy navigation
- Calibration-free technology
- Rechargeable battery: >100 tests one cycle
- Bluetooth connectivity
- Flexible use
- Portable or PC mode
- Real-time animated incentives
- Real-time data transfer
- Proven EMR integration with top EMR/EHR systems



Incentive screens



^{ndd} TrueFlow

makes the difference

NDD's unique ultrasonic flow measurement is highly accurate in all flow ranges, independent of gas composition, pressure, temperature and humidity. **NDD TrueFlow** is a hygienic and resistance-free solution that does not require calibration during its lifetime.

EasyOne Connect

EasyOne Connect software offers one database and one platform for all EasyOne point-of-care-solutions. Data management has never been easier.



Specifications

Test types: FVC, FVL, SVC, MVV and Pre/Post testing

Languages: English, Danish, Dutch, French, German, Italian, Polish, Portuguese, Russian, Spanish, Swedish

EMR connectivity: EasyOne Connect

Dimensions: 3.4" x 6.1" x 1.4", 13 oz
87 mm X 155 mm x 36 mm, 0.356 kg

Standards: ATS/ERS 2019 and 2005, NIOSH, OSHA, SSA Disability

Part numbers

2500-2A: EasyOne Air spirometry system (US and Canada)

2500-2INT: EasyOne Air spirometry system (international)

5050-50: EasyOne FlowTube box of 50

5050-200: EasyOne FlowTube box of 200